

# Wildlife and Countryside Act 1981

## The Definitive Map and Statement of Public Rights of Way in Dorset

Map accompanying the DMMO application for the route in the parish of East Stour to be recorded as a bridleway. The route runs from Point A (at approximately ST 8058 2404) on the county road at Hunger Hill opposite Primrose Farm, eastwards along part of footpath N 62/13 to Point B (at approximately ST 8103 2400) past High Grove Farm to Point C (at approximately ST 8165 2383) where it joins definitive footpath N 62/2 and continues southwards and westwards to Point D (at approximately ST 8156 2366), and continues south-westwards along Common Lane to Point E (at approximately ST 8146 2342), where it joins the public road.

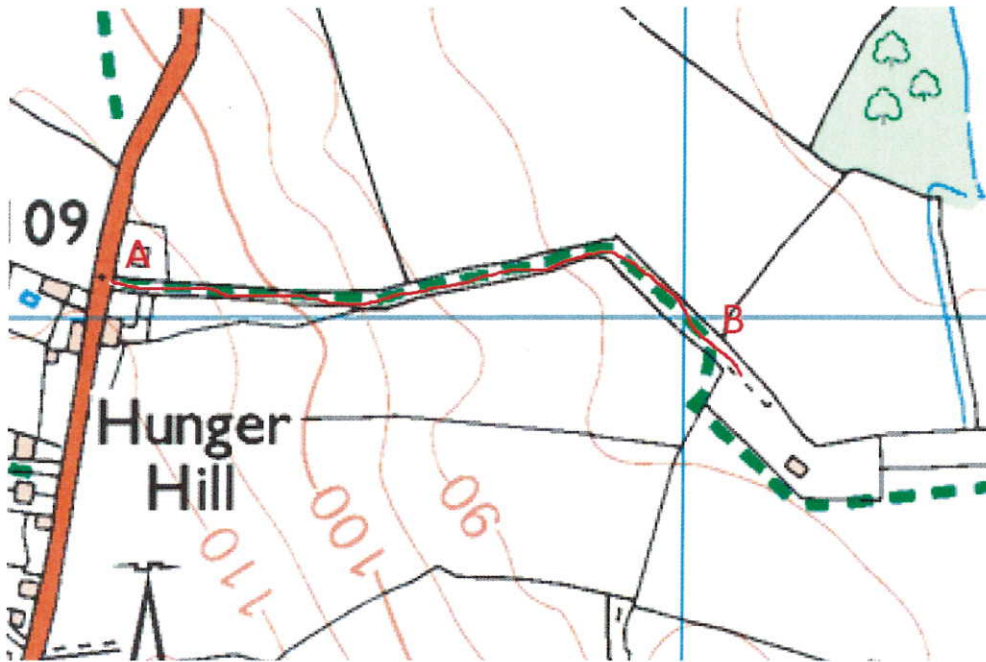


The following maps show the application route as a larger scale:

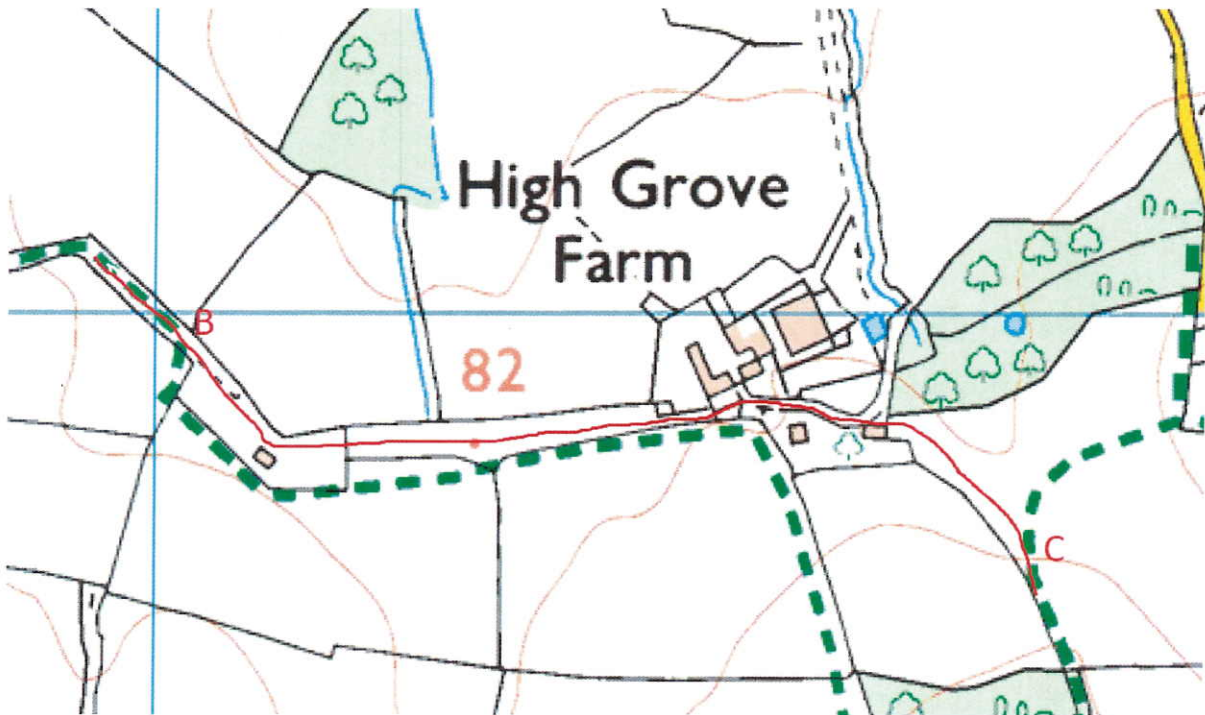
"This copy has been made by or with the authority of Dorset Council pursuant to section 47 of the Copyright, Designs and Patents Act 1988 ("the Act"). Unless the Act provides a relevant exception to copyright, the copy must not be copied without the prior permission of the copyright owner."

# Wildlife and Countryside Act 1981

The Definitive Map and Statement of Public Rights of Way in Dorset



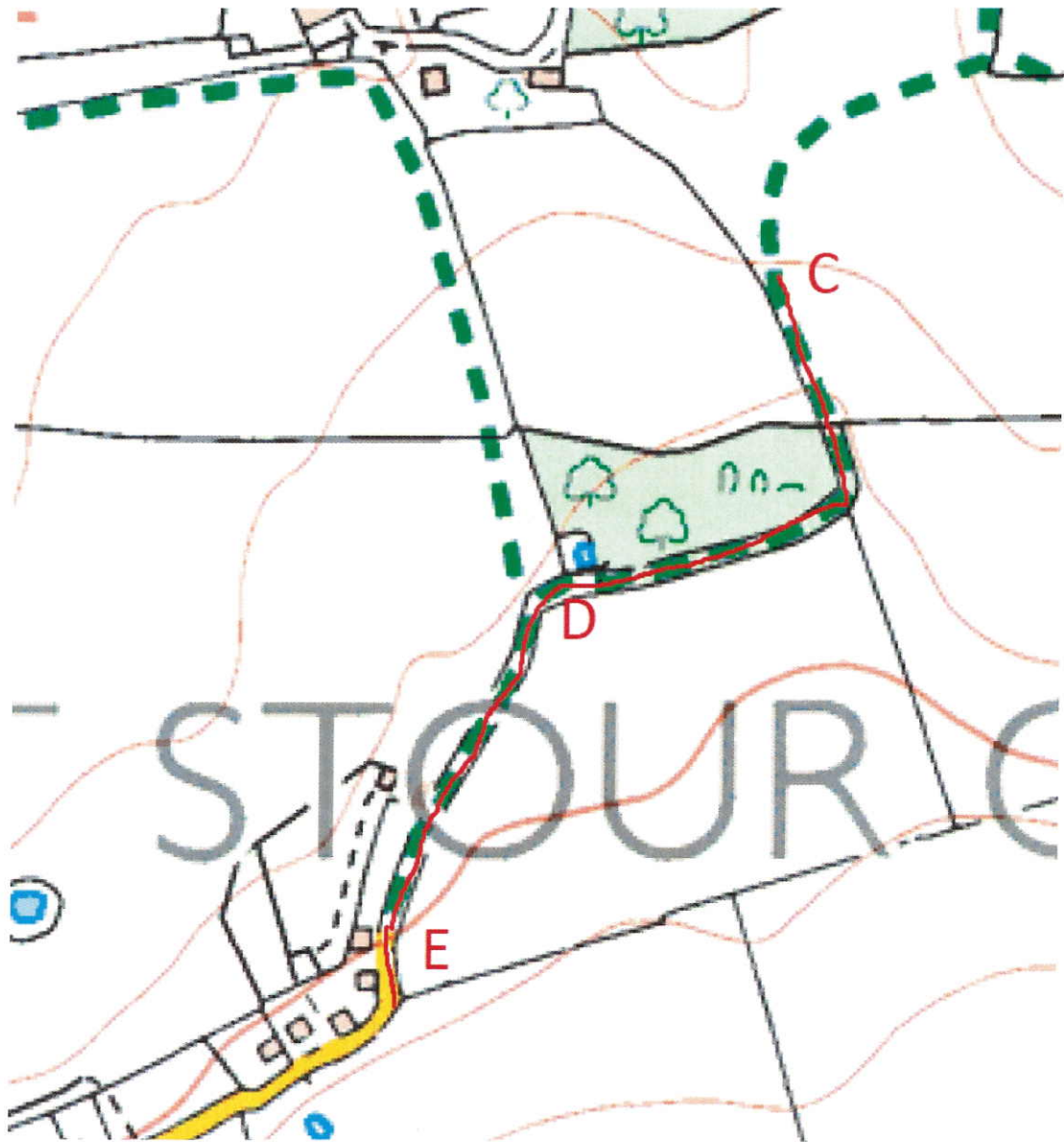
Section from A to B along the route of footpath N 62/12



Section from B to C which currently has no recorded status

# Wildlife and Countryside Act 1981

## The Definitive Map and Statement of Public Rights of Way in Dorset



Section from C to D to E, along the line of footpath N 62/2

# Wildlife and Countryside Act 1981

## The Definitive Map and Statement of Public Rights of Way in Dorset



Google Earth image (note: in this image the route is overshadowed by the corner of the building and the route does NOT go through the building)



Google earth image looking southwards with Point C on the top left of the image, (note the route is overshadowed by the corner of the building, and the route does NOT go through the building.)